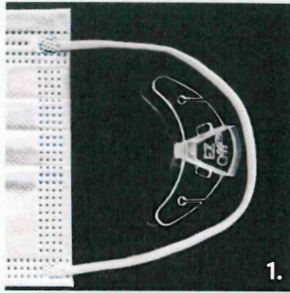


EZ-OFF™

Please review instructions before use.

ATTACH

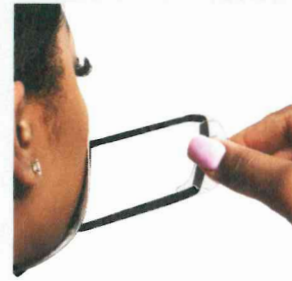
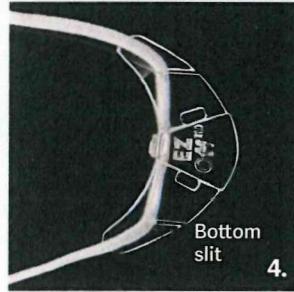
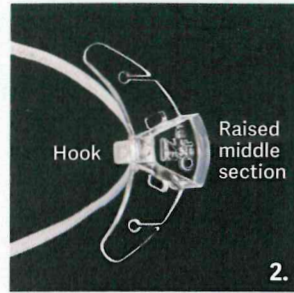
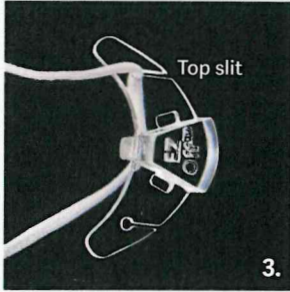
1. Lay mask on a flat surface "face side" up. Place the EZ-OFF inside the mask string with the raised middle section facing up and the hook facing down.



2. Lift the hook and slide the mask string under it.

3. Slide the string into the top slit as far as it will go.

4. Slide the string into the bottom slit as far as it will go, then center EZ-OFF on mask string.



WEAR

Grasp the raised middle section of EZ-OFF with your thumb and forefinger, pull around one ear at a time. Be sure the raised middle section is closest to your head and the hook faces your ear.



REMOVE

To remove grasp the raised middle section pull backwards from behind your ear, then away from your head.



HEARING AIDS

Put your hearing aid(s) on first. Be sure to position the top part of the EZ-OFF between the outer ear and hearing aid. If necessary use a mirror.

FOR HOW TO VIDEOS VISIT EZEE-OFF.COM